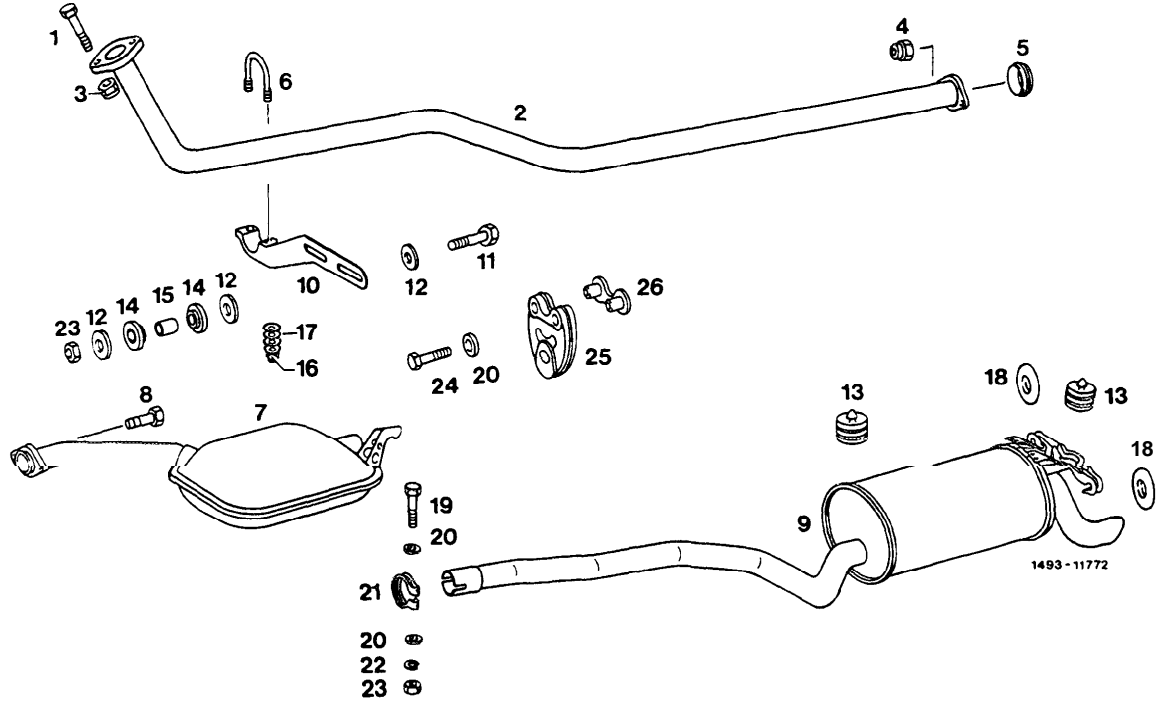


49 Exhaust system

Removal and installation of exhaust system Job No.
49-100

49-I 00 Removal and installation of exhaust system



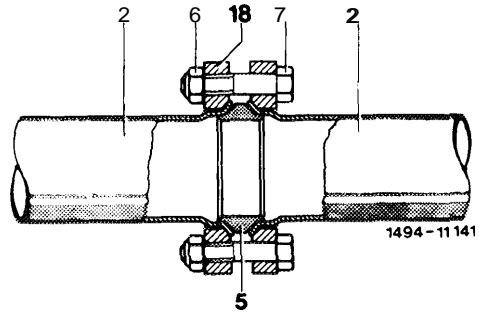
1	bolu		
2	boru	boru
3	boru	boru
4	boru	boru
5	boru	boru
6	boru	boru
7	boru	boru
8	bolu		
9	boru	boru
10	boru		
11	bolu	boru
12	boru	boru
13	boru	boru
14	boru	boru
15	boru	boru
16	boru	boru
17	boru	boru
18	boru	boru
19	bolu	boru
20	boru	boru
21	boru	boru
22	boru	boru
23	boru	boru
24	boru	boru
25	boru	boru
26	Clamping plate		

Removal

Removal

1

2 **Remove** **flange** **connection** **to** **manifold** **and** **align** **flange**, **if** **required**. **Clean** **cone** **connections** **of** **pipes** (2 **and** 22), **if** **required**, **with** **wire** **brush**.

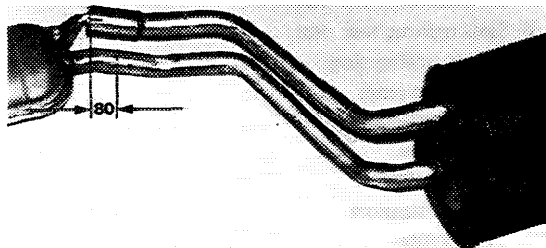


Installation

3

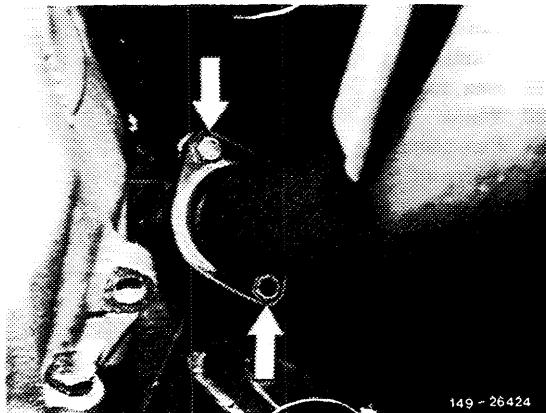
Place new rear muffler with plug connection accurately above removed system and mark pipe length of new rear muffler on removed installation.

Cut pipe 80 mm from mark (tolerance minus 10 mm) in direction of rear muffler to obtain a plug-in depth of 70-80 mm.

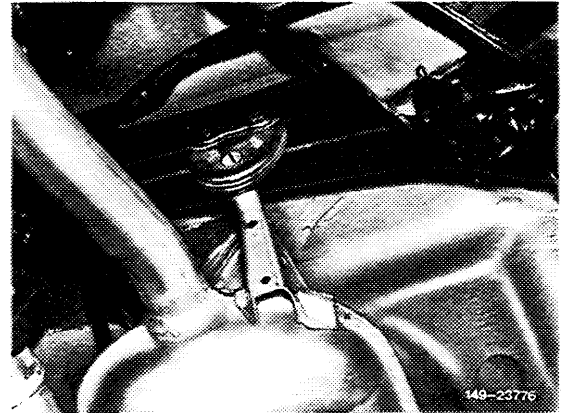


4 Always renew self-locking hex. nuts on principle.

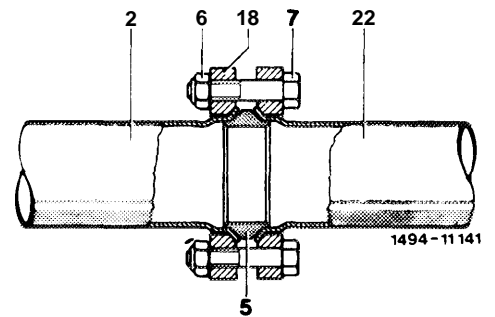
5 Uniformly tighten flange connection to manifold. Tightening torque of self-locking nuts 20 Nm.



6 Mount rear exhaust system with center and rear muffler, while simultaneously engaging exhaust system in mounting rubber on rear axle carrier.

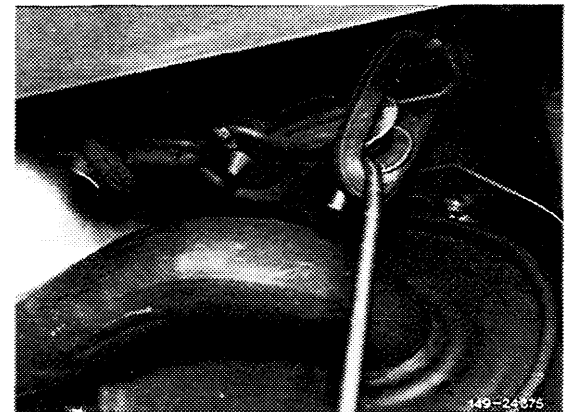


7 Mount sinter-sealing ring (5) on flange connection and pay attention to correct seat. Tightening torque of self-locking hex. nuts 20 Nm.



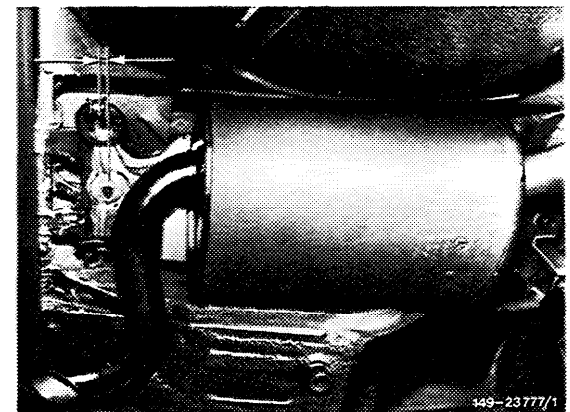
- 2 Front exhaust pipe
- 5 Sinter-sealing ring
- 6 Self-locking hex. nut
- 7 Hex. screw
- 18 Flange
- 22 Rear exhaust pipe

8 Engage rubber rings with suitable hooks to rear damper.



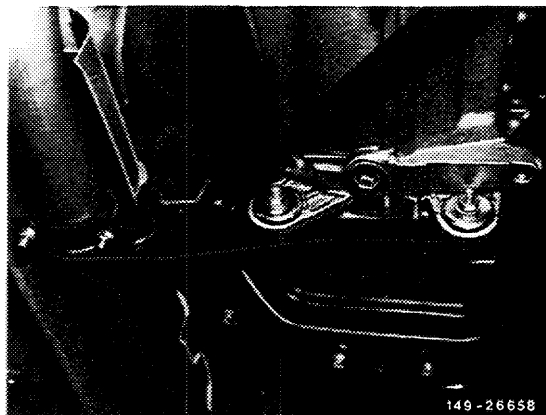
9 Mount rear damper in such a manner that the holding clamp of the rear damper is approx. 10 mm in front of holders on frame floor, so that the correct installation position is assured (arrows) in the event of an elongation of exhaust system.

Note: The above refers to mufflers in repair version with plug connection between center and rear muffler only.



10 **Ísland**
Ísland
7/12/2012
12h

Ísland



Ísland
Ísland
Ísland

11 **Ísland**

