

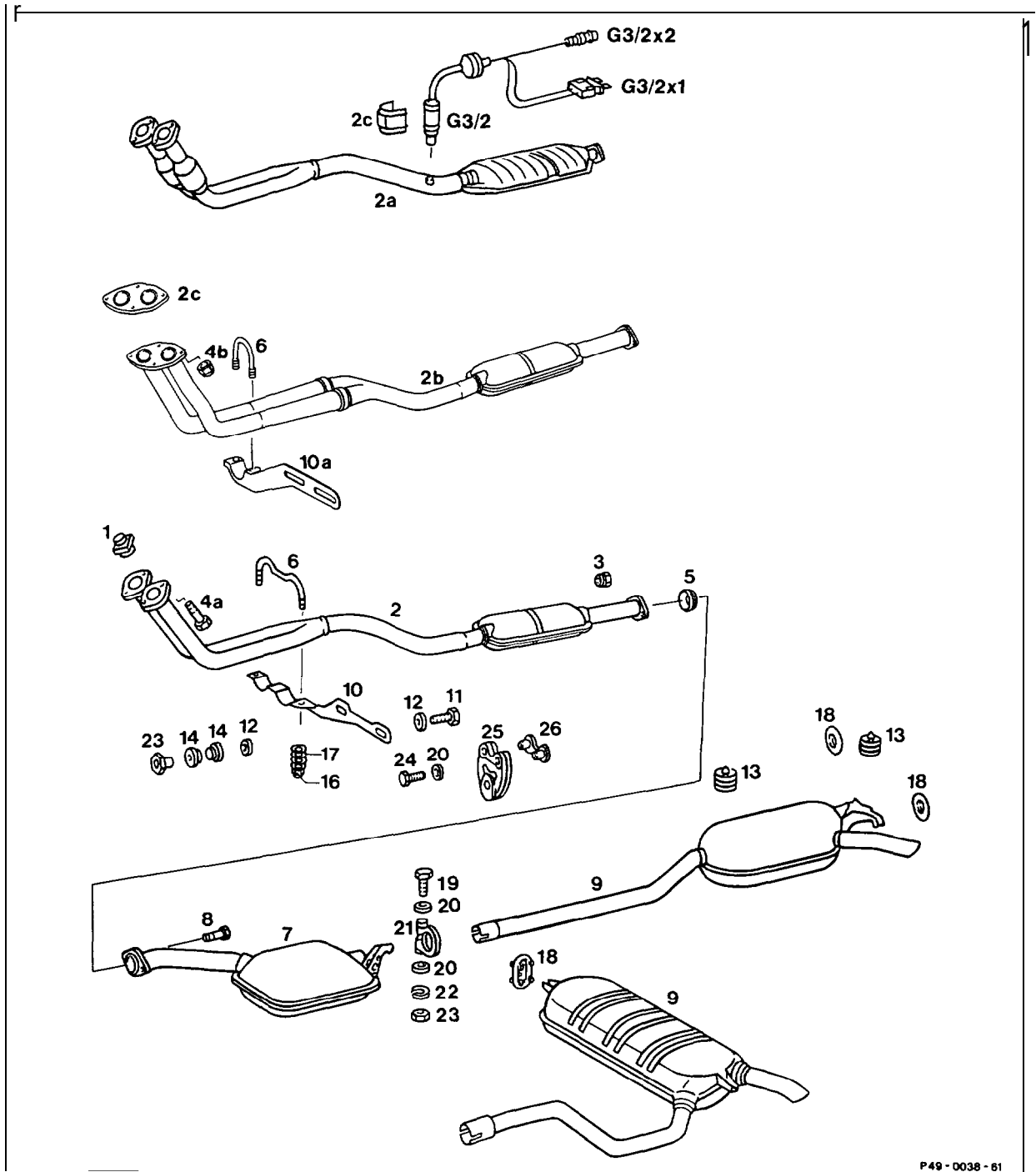
Exhaust system 49

Job No.

Removal and installation of exhaust system	49 – 100
Removal and installation of exhaust system at push-in joint	49 – 120
Replacement of center and rear mufflers	49 – 140
Replacement of exhaust support bracket at transmission	49 – 180

49-I 00 Removal and Installation of exhaust system

Preceding work:
Removing and installing engine compartment panelling.



P49 - 0038 - 61

Shown on Model 124

Exhaust system as of plug connection remove, replace and bolt together, install (49-l 20).

Heated oxygen sensor (G3/2) from front exhaust pipe (2a) remove, install (depending on version). To do this: Separate heating coil plug connection (G3/2x1) and oxygen sensor signal plug connection (G3/2x2) in right footwell, plug together.

Pull off shield (2c), fit on (open side to the rear).

Installation instruction

Coat thread with paste 000 989 88 51. Ensure line is correctly laid.

Pipe shackle (6) with Belleville spring washers (17) and self-locking nuts (23) remove, fit on. Tightening torque 7 Nm.

Installation instruction

Check parts, replace if necessary.

Caution!

Pay attention to figure note for installing Belleville spring washers (17).

Bolts (4a) unscrew, screw in. Replace bolts (4).
Tightening torque 25 Nm.
Tighten flanged joint evenly.

Note Model 201 up to 09/84:

Replace gasket (2c) and self-locking nuts (4b).
Tightening torque 30 Nm.

Supporting bracket (10 or 1 Oa) with bolts (1 1), washers (12), rubber washers (14) and nuts (16) **remove, fit on. Tightening torque 20 Nm.**

Installation instruction

Check parts, replace if necessary.

Front exhaust pipe with catalytic converter (2a) or front muffler (2b, 2) take off, fit on.

Rivet nuts (1)

at exhaust manifold, remove, install.
Knock out rivet nuts with suitable tool
(e. g. bolt).

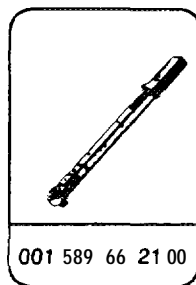
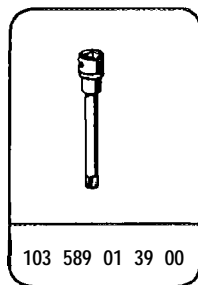
Exhaust system

check for leaks with engine running.

Installation instruction

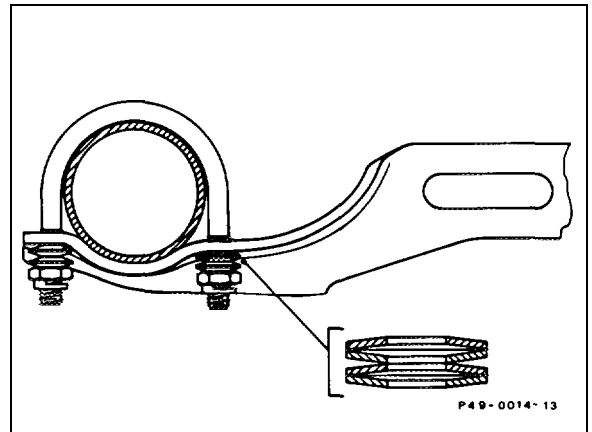
Install rivet nuts with caulking bolt
103 589 01 39 00 einbauen. Tightening torque
of caulking bolt 30 Nm.

Special tools



Caution!

Install the **Belleville** spring washers at the pipe
shackle so that the concave faces stand off from
each other (as shown in illustration).

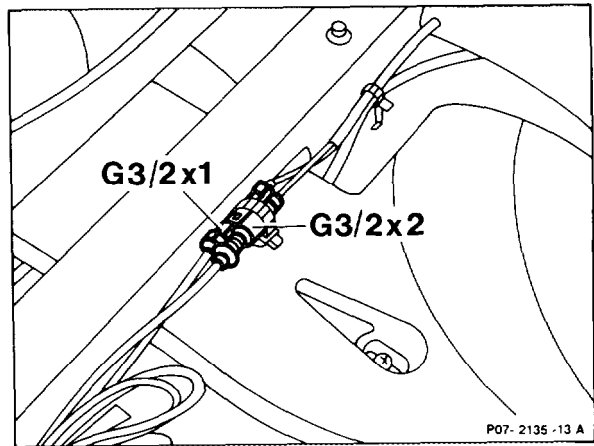


Plug connections of oxygen sensor in front of front right seat (if heated oxygen sensor screwed into front exhaust pipe).

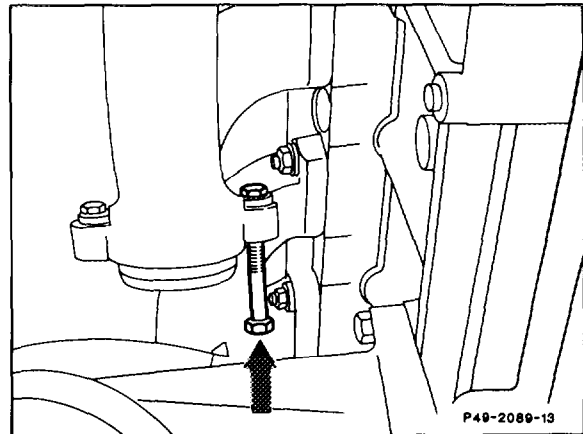
Note

Engine 102.96/98 KAT as of 09189 heated oxygen sensor in exhaust manifold.

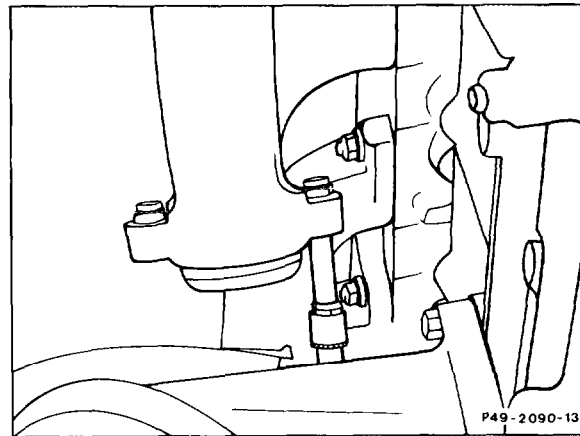
G3/2x1 Oxygen sensor heating coil plug connection
G3/2x2 Oxygen sensor signal plug connection



Knock rivet nuts out of the holes in the exhaust manifold with a suitable bolt. Screw in bolt by hand only.



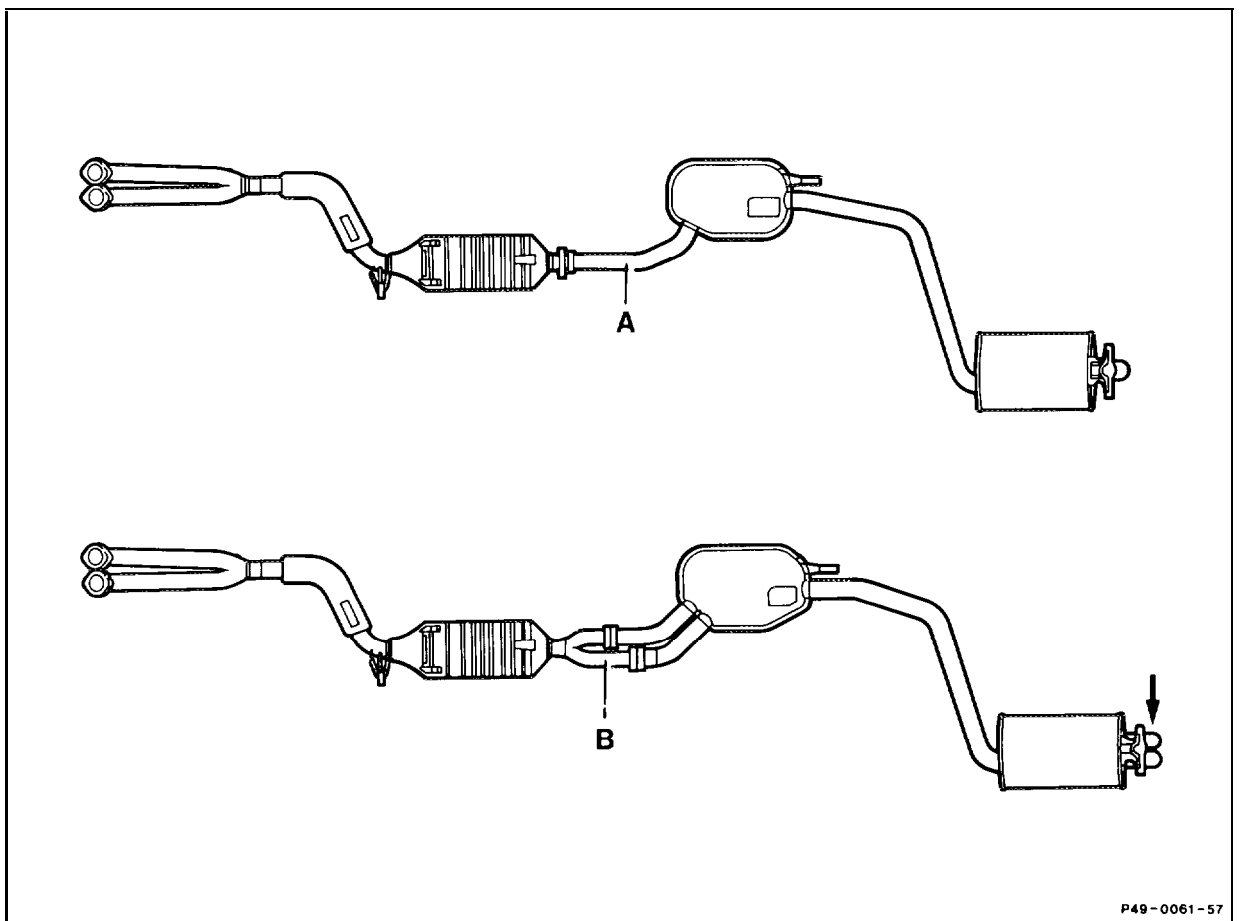
Insert new rivet nut into hole of exhaust manifold. Screw in caulking bolt and tighten to a torque of 30 Nm.



**Model 201 with engines 102.985 KAT
as of 01/91**

As part of our policy of continuous technical development, engines of a higher output have been installed in the above models. The updated engine output is achieved as a result of a modified exhaust system.

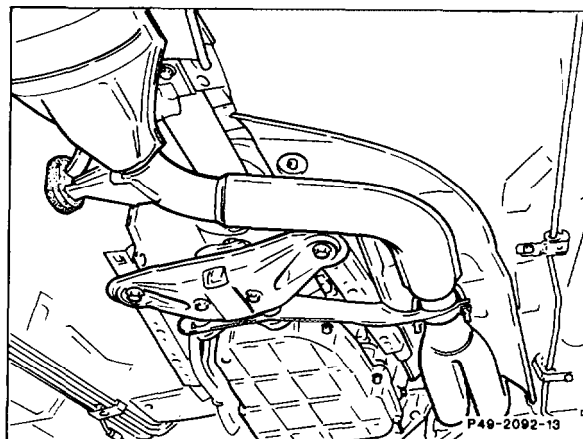
- Two-pipe between catalytic converter or front muffler and center muffler.
- Pipe diameter of 55 mm (was 48 mm) between center and tail muffler.
- Volume of center muffler enlarged.



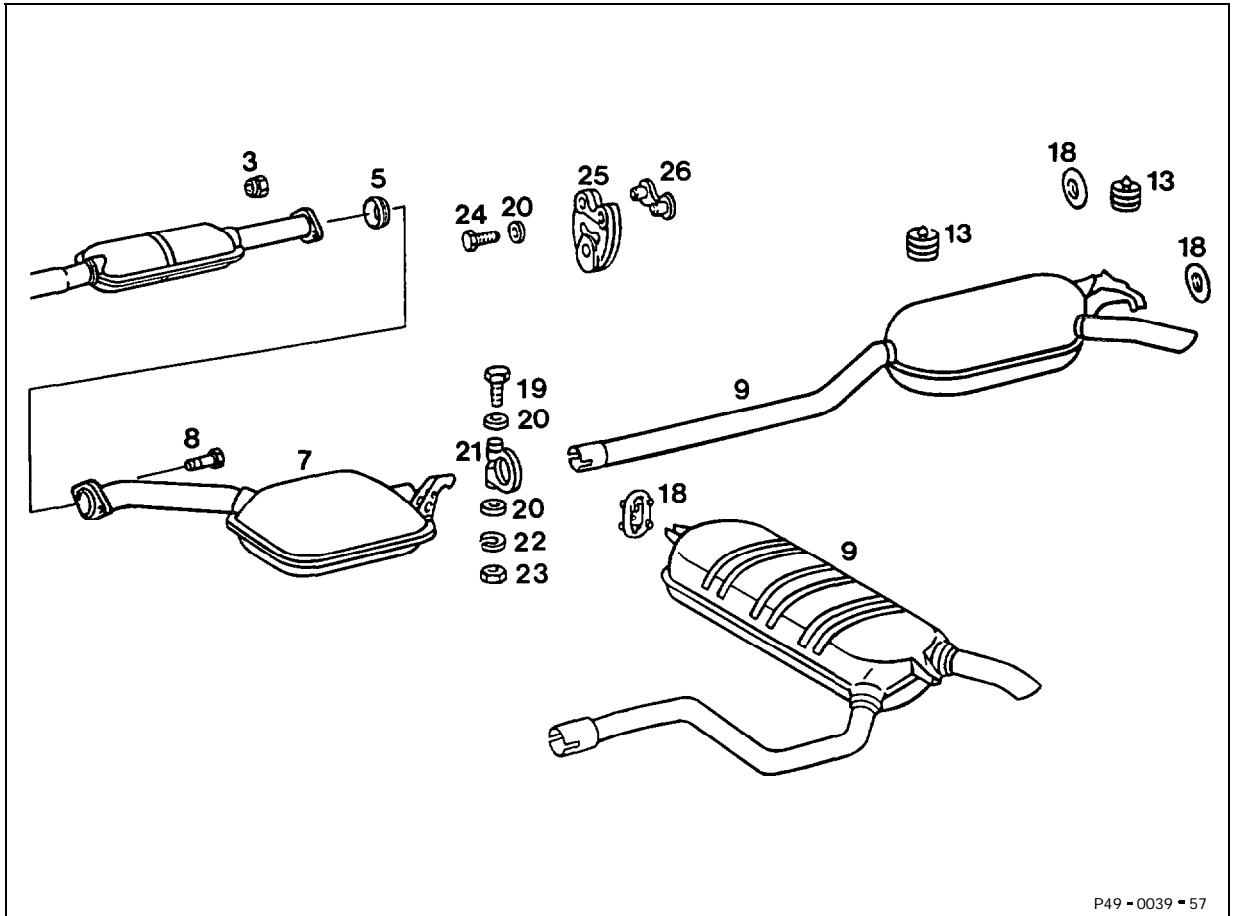
- A Previous version
- B Present version

USA 1991 **Model 201** with engine 102.985

- Pre-catalytic converters omitted.
- Insulation upstream of CAT.
- Catalytic converter enlarged (11 ").
- Suspended upstream of catalytic converter.



49-I 20 Removal and installation of exhaust system at push-in joint



P49-0039-57

As shown on Model 124, Model 201 similar

Bolt (19), washers (20), spring lock washer (22),
nut (23)

remove, check, replace if necessary, fit on.
Tightening torque 25 Nm.

Bolted joints, self-locking nuts (3), bolts (8)

remove, fit on.
Replace self-locking nuts (3), bolts (8).
Tightening torque 20 Nm.

Rear muffler (9)

remove from rubber ring (18) and take off, fit on
and insert in ring.

Installation instruction

Check tail muffler (9) and rubber ring (18) for
wear, replace if necessary.

Pipe clamp (21)	pull off rear muffler (9), check, replace if necessary, fit on.
Bolt (24), washers (20), hanger plate (25) and tensioning plate (26)	take off, examine for wear, fit on.
Center muffler (7)	take off, fit on.
Sintered seal (5), flange (5a), graphite seal (5b)	check suitability for reuse, replace if necessary.
Rubber buffer (13)	check for wear, replace if necessary.
Exhaust system	check for leaks with engine running.

Installation instruction

Ensure parts are correctly installed.

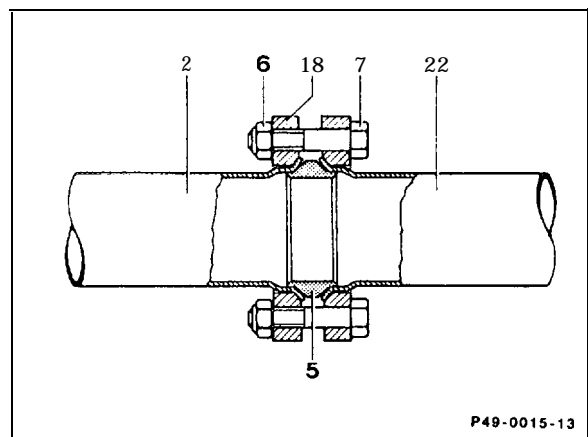
check for wear, replace if necessary.

check for leaks with engine running.

Note

If necessary, clean off combustion or corrosion residues from tapered connections of pipe (2, 22) and sintered seal (5) with emery cloth.

Ensure the parts are correctly installed.



- 2 Front exhaust pipe
- 5 Sintered seal
- 6 Self-locking hexagon nut
- 7 Hexagon bolt
- 18 Flange
- 22 Rear exhaust pipe

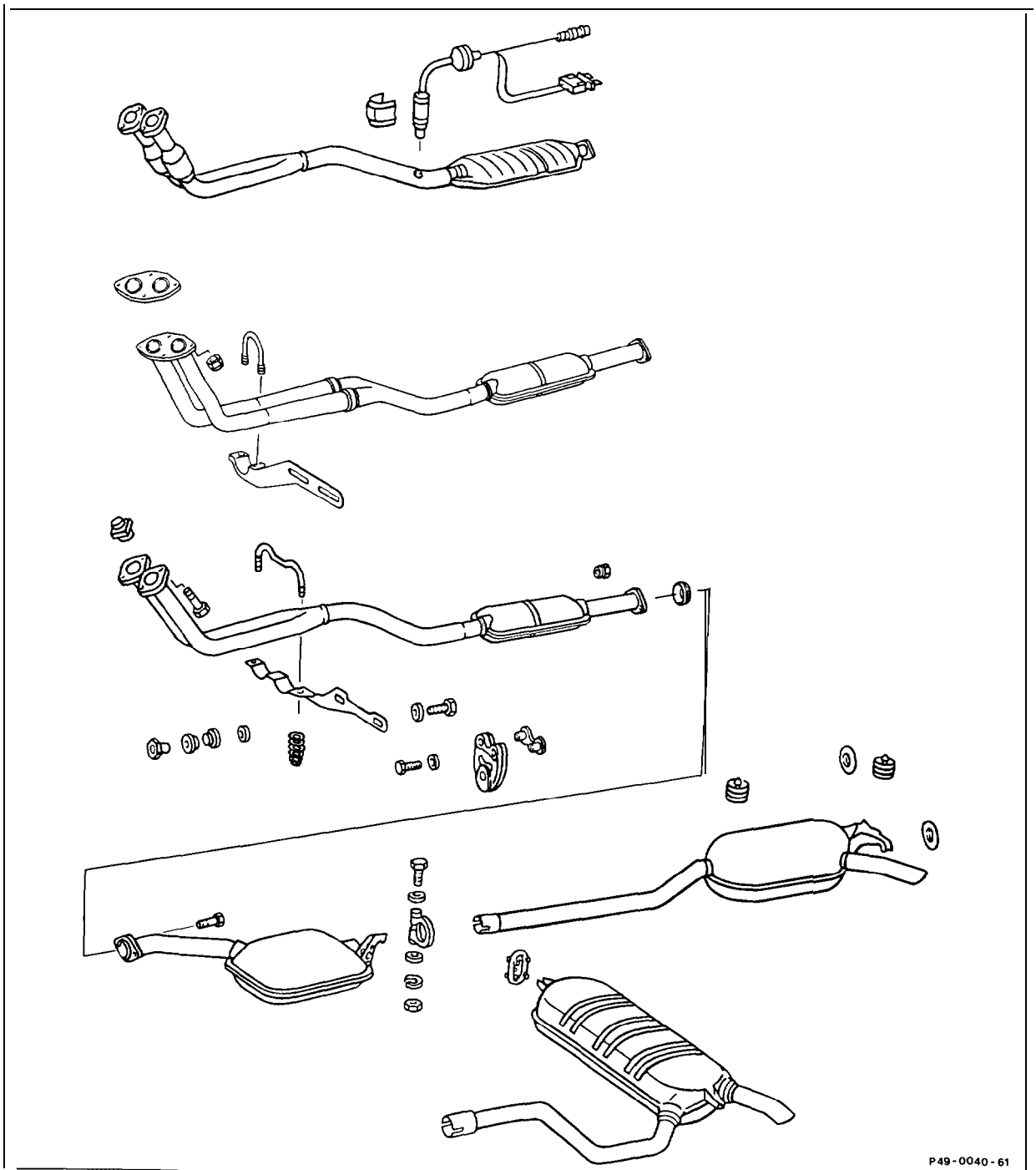
49-140 Replacment of center and rear mufflers

Preceding work:

Removing exhaust system as from plug connection (49-1 20).

A. Push-fit version

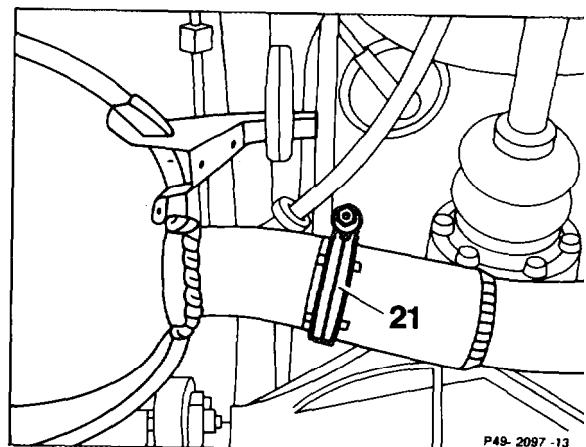
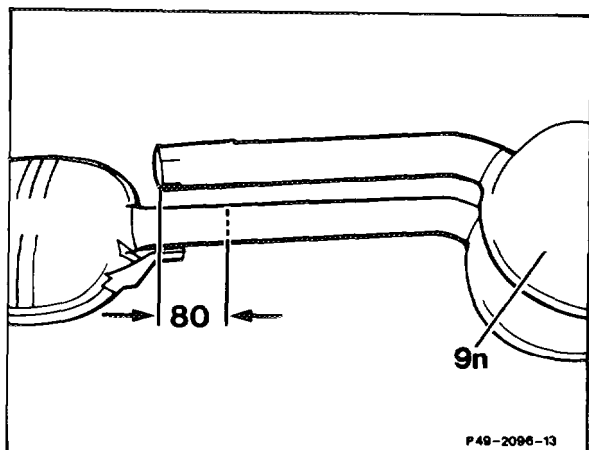
see removal and installation of exhaust system at plug connection (49-120).



P 49 - 0040 - 61

Shown on Model 124, Model 201 similar

B. Welded version



New rear muffler (9n)

place with plug connection exactly over the removed exhaust system and mark pipe length of new rear muffler on the removed exhaust system.

Cut through pipe 80 mm

from the marking (tolerance minus 10 mm) in direction of rear muffler (broken line) to maintain an insertion depth of 70 – 80 mm.

Exhaust pipe clamp (21)

use for installation.

Installation

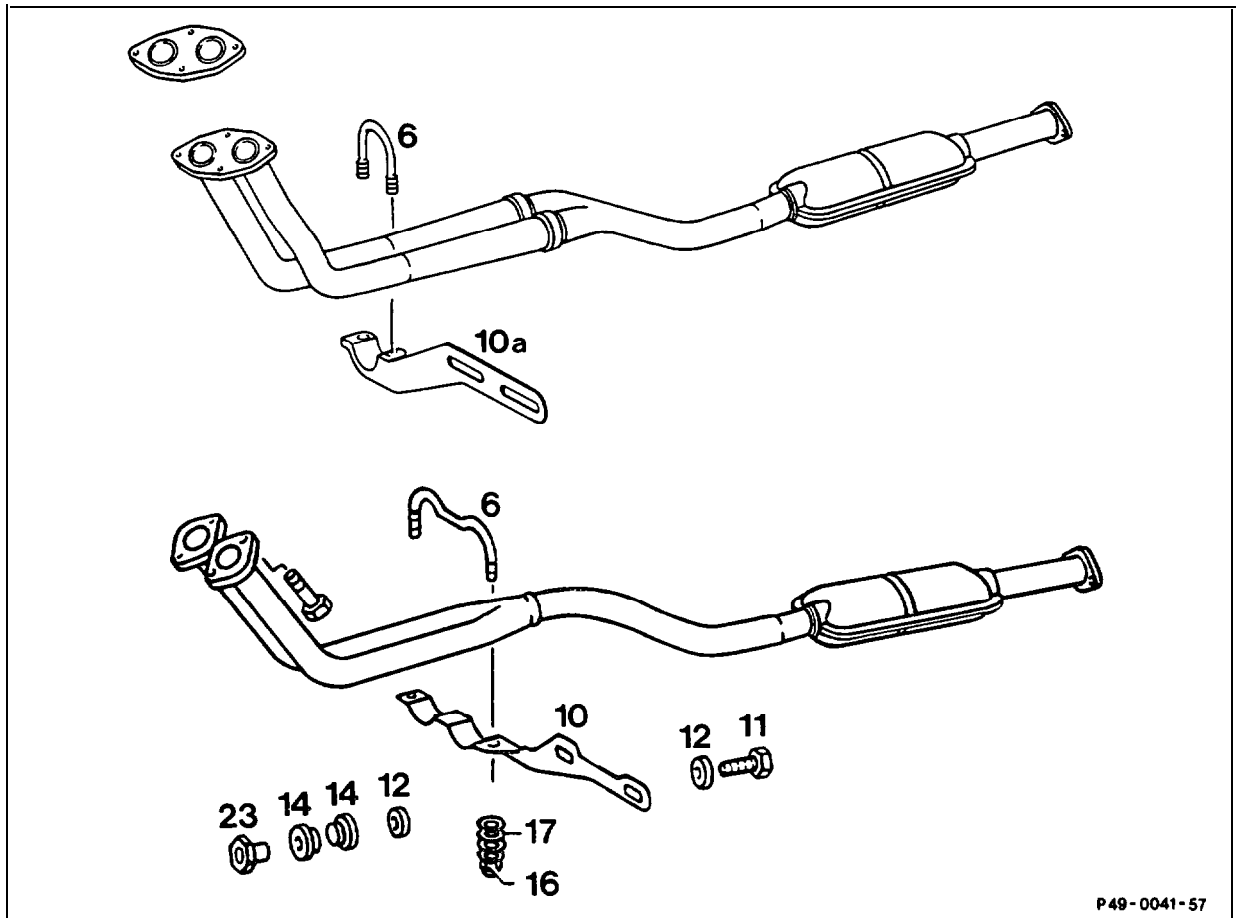
is performed similar to rear steps in (49-120).

Note

Replacement of the rear muffler is similar to replacement of center muffler.

49-I 80 Replacement of exhaust support bracket at transmission

Preceding work:



Pipe shackle (6) with Belleville spring washers (17) and self-locking nuts (23) remove, fit on. Tightening torque 7 Nm.

Caution!

Pay attention to figure note for installing Belleville spring washers (17).

Supporting bracket (10) with bolts (1 1), washers (12), rubber washers (14) and nuts (23) remove, fit on. Tightening torque 20 Nm.

Note

Check parts, replace if necessary.

Model 201 as of 10/84

Double pipe supporting bracket (10) replaces single version (1 0a).

⚠ Caution!

Install the Belleville spring washers at the pipe shackle so that the concave surfaces face each other (as shown in illustration).

